

# Returning to School - School Plans and Advice for Parents for Monday 8th March 2021

Following the recent government announcement, we wanted to write to you to update you on our plans for a safe return to school for all pupils.

**We are pleased to announce that the school will reopen to all pupils on Monday 8<sup>th</sup> March 2021. Due to government guidance being in place, the school will of course still be running slightly differently to ensure all safety measures are in place to protect pupils, parents and staff.**

Many of the systems that were in place during the autumn term of 2020 will be in place again from March 2021, so many of you will now be used to the different operating systems.

Once again we are determined that the children will return to a positive and caring environment where the needs of all our pupils are met. All staff have been working on a curriculum that will ensure our pupils feel safe and settled as we ease them back into school life.

The information in this document is following the current government guidance and may be subject to change if this changes.

Please ensure all slides are read and please contact us on [admin@rokeby.hull.sch.uk](mailto:admin@rokeby.hull.sch.uk) if you have any questions.



**Rokeby Park Primary School**



# Welcome Back

**On Monday 8<sup>th</sup> March** all pupils will be welcomed safely back to school and we cannot wait!

As the children have missed a significant amount of time in school, which may have affected their emotional, social and mental well being, we will be welcoming all children back and ensuring our curriculum helps them to settle back into school and learning.

The way the school runs will be very similar to what the children experienced back in the autumn term of 2020. We want to ensure it is as safe as possible for the return of more pupils and staff. We want to share with all parents information about the protective measures that have been put in place. This will ensure you are fully aware of how things will work in school. We have updated our thorough risk assessment which has helped us to ensure the school is as safe as possible.

## **Expectations of Parents**

We are doing everything we can in school to safeguard children, parents and staff and we are asking that you support us with this. We have put in place social distancing procedures and ask that you follow these when dropping off and collecting your child/children from school.

## **Attendance at School**

**From Monday 8<sup>th</sup> March 2021 attendance at school is mandatory and all pupils must attend.** The school will be following the local authority code of conduct relating to issuing fixed penalty notices for non-attendance.

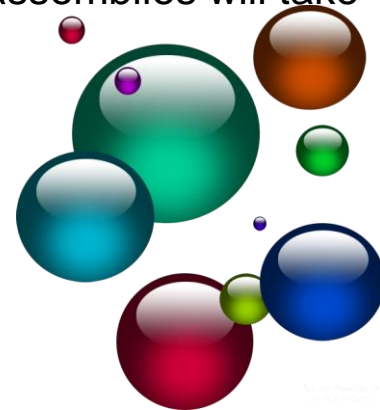


# Bubbles

The government guidance advises that primary aged pupils can be taught in class sized bubbles.

At Rokeby Park we will primarily be sticking to class bubbles of 30.

There will be no large gatherings in school, such as assemblies and performances. All assemblies will be done in classrooms and whole school assemblies will take place on Teams.





# Staggered Start Times/Pick Up Times

Please see below the staggered start/finish time from Monday 8<sup>th</sup> March 2021.

**Social distancing must be strictly adhered to and it is the responsibility of the parent to ensure this is carried out.**

**Only one parent should accompany their child/children at drop off and collection times.**

**Please note:  
If you have children in different year groups the arrangements that were in place during the autumn term will continue from Monday 8<sup>th</sup> March.**

Year Group	Start Time	Finish Time	Drop off/Collection Point
Nursery & Reception	8.50 am	2.50 pm	Main gate to school at front
Year 1	8.50 am	2.50 pm	Main gate to school at front
Year 2	8.50 am	2.50 pm	School car park gate at rear
Year 3	9.00 am	3.00 pm	Main gate to school at front
Year 4	9.00 am	3.00 pm	Main gate to school at front
Year 5	9.00 am	3.00 pm	School car park gate at rear
Year 6	8.50 am	3.00 pm	School car park gate at rear



# Social Distancing

In line with government guidance on social distancing the following procedures will be in place:

- Only one adult should accompany their child/children to school.
- All pupils will be dropped off at the school gates and greeted by a member of staff from their class.
- Parents/carers will not be allowed onto the school site.
- If anyone would like to speak to a teacher or member of the school team they should telephone or email the school to make an appointment. Appointments will be done over the telephone, online or if necessary using social distancing.
- Drop off and collection times are strict and must be followed to allow the next group of pupils to enter the school and socially distance. If you arrive late you may be asked to wait.
- Once you have dropped off/collected your child, **you must move away from the school gates.**
- Children and staff will stay within one class and not mix with other classes as much as possible.
- Children will be encouraged to socially distance as much as possible and will not be able to play contact sports.
- Staff cannot sit with or hug your child if they are distressed.
- A one-way system is in operation around the school to help with social distancing.

**It is really important that you help support us with social distancing at the school gates. Please do not stand around the school gates before you see your child or when you have collected them. Please move away immediately. If possible when collecting your child/children, please wait well away from the gates, and possibly at the other side of the road (you will be called when your child is ready), so that you are not mixing with other households. This will help to protect everyone in our community. Please support the staff and understand that there may be delays when handing children over so that we can ensure children are collected by the correct adult. Please do not hold conversations with the staff when they are dismissing children from school because they will be concentrating on making sure children meet their parent/carer. Parents are advised to avoid public transport at busy times and to walk, cycle or scoot to school.**



# Bringing items to school

In line with government guidance parents should limit the amount of items their children bring to school.

Please only allow your child to bring necessary items such as:

- Lunch boxes (plastic containers are best as these are easy to clean and wipe down thoroughly)
- Hats and coats
- Books
- PE kits
- Sandshoes (these can then be left at school)
- Sun cream (when the weather warms up)

Minimising the amount of items transferred between home and school will help prevent the spread of the virus. Please do not allow your child to bring personal belongings from home into school. Pupils do not need to bring water bottles to school as these are provided.

If you have any questions about this, please contact your child's teacher.



# Classroom Environments

Tables will be facing forwards and any unnecessary furniture has been removed to create more space for social distancing.

All pupils will be given their own set of resources to use so they do not share.

Each class bubble will have their own set of playtime resources and equipment so that resources are not shared across class bubbles.

## **School Uniform**

When all pupils return to school they should be wearing their full school uniform. Please remember that we must keep classrooms well-ventilated, therefore, it is essential that all pupils have a school jumper or cardigan with them. Even when it is sunny it can still be quite cold in parts of the school.





# Lunch Times

To facilitate a safe environment and to ensure that pupils are remaining in their class bubbles where possible, children will eat their lunches within the classroom environment.

Pupils will be supervised at all times and will also be given the opportunity to play outside. Lunchtimes will be staggered across the school to ensure year groups and classes are not mixing outside and when using the toilets.

**Due to the staggered lunch times we are asking parents to avoid taking pupils home for lunch.**

<b>Year Group</b>	<b>Lunch</b>	<b>Playtime</b>
<b>YN &amp; YR</b>	<b>11.30 am</b>	EYFS outdoor area
<b>Year 1</b>	<b>11.45am</b>	12.00 pm -12.25pm
<b>Year 2</b>	<b>11.45 am</b>	12.00 pm -12.25pm
<b>Year 3</b>	<b>12.10 pm</b>	12.25 pm -12.50pm
<b>Year 4</b>	<b>12.10 pm</b>	12.25 pm -12.50 pm
<b>Year 5</b>	<b>12.00 pm</b>	12.15 pm -12.40pm
<b>Year 6</b>	<b>12.00 pm</b>	12.15 pm -12.40pm





# Lunch Offer

In light of the DFE guidance, all primary schools are teaching pupils in bubbles. As much as possible, pupils should not mix with pupils from other bubbles.

Therefore, an alternative approach to lunch times will be in place, so that pupils can eat in their classrooms.

**This will ensure that bubbles are not broken.**

## **Will a hot meal be offered?**

We will be providing a hot meal option and a packed lunch option for all pupils. The hot meals will be delivered in environmentally friendly disposable containers.

### **Menu options will continue to be limited each day:**

1 hot meat option

1 hot vegetarian option

Ham or Cheese choice of sandwich bag option.

Traditional school puddings, such as sponge and custard, will be temporarily removed from school menus. These will be replaced with fruit bags, yogurts and jelly.



# Breakfast & After School Club

At Rokeby Park, we appreciate some of our parents are working parents who require the support of the school's breakfast and after school club. We are only able to open for a limited number of pupils and places will be restricted to the pupils of parents who work.

To enable breakfast and after school club to open safely, both clubs will be run in the hall each day. Pupils will be segregated into their year groups and will be allocated a place at a year group table. Pupils will be encouraged to socially distance as much as possible but will be with pupils who are from their class bubble.

Pupils are only able to attend the clubs if a place has been booked and payment has been made. If pupils turn up to breakfast club or after school club without booking a place, they will not be able to attend and parents will be contacted.

We are sure you will all understand that our priority at this time is to welcome all the pupils back in March, in a safe and controlled way.



# After School Clubs

We are incredibly proud of our extra curricular offer and fully intend to get this back up and running and on offer to all of our pupils as soon as we can.

Due to the guidance in place, it will not be possible to offer extra curricular activities when we return in March, but we will hope to be able to offer them again at some point this year. We will keep you updated.





# SEND Provision

If you have any concerns about your child, please contact your child's class teacher to discuss these before your child returns to school.

## Parent/Pupil Concerns

If you have any questions or concerns about your child/children returning to school in March, please do not hesitate to contact the school either by email or by telephoning the school.

We want all our pupils to return safely and with confidence and we will support all families to enable this to happen.

If you feel your child may need support with their emotional well-being, please contact your child's class teacher to discuss your concerns.



# Pupil Behaviour

- The school's behaviour policy has been updated to reflect the current changes in school.
- Pupils will be reminded about new routines that have been put in place and the expectations for social distancing, how important these are and that they are in place to keep everyone safe.
- Pupils will be reminded about the school's expectations for behaviour.
- If pupils refuse to follow the school's behaviour expectations and are putting others at risk, strict sanctions, up to and including exclusion, will be used.
- If a pupil consistently refuses to follow the arrangements for social distancing or they deliberately cough at pupils or staff, putting them at risk, parents will be contacted and must collect their child from school.
- Children must listen to and follow instructions - it is dangerous not to do so.





# TRACK and TRACE

**All schools are required to actively engage in the 'Track and Trace' system.**

Pupils, staff and other adults will not be permitted to come into the school if they have [coronavirus \(COVID-19\) symptoms](#), or have tested positive.

If anyone in the school becomes unwell with a new, continuous cough or a high temperature, or has a loss of, or change in, their normal sense of taste or smell (anosmia), they will be sent home and advised to follow '[stay at home: guidance for households with possible or confirmed coronavirus \(COVID-19\) infection](#)', which sets out that they must self-isolate for at least 10 days and should [arrange to have a test](#) to see if they have coronavirus (COVID-19). Other members of their household (including any siblings) should self-isolate for 10 days from when the symptomatic person first had symptoms.



# What will we do if a member of the school community tests positive?

All parents/staff and visitors to the school are required to inform the school if they or their family members have had a positive test for Covid-19.



The school will contact the local health protection team.



The health protection team will carry out a rapid risk assessment to confirm who has been in close contact with the person during the period that they were infectious, and ensure they are asked to self-isolate.



Household members of those contacts who are sent home do not need to self-isolate themselves unless the child, young person or staff member who is self-isolating subsequently develops symptoms. If someone in a class or group that has been asked to self-isolate develops symptoms themselves within their 10-day isolation period they should follow ['stay at home: guidance for households with possible or confirmed coronavirus \(COVID-19\) infection'](#). They should get a test, and:

- if the test delivers a negative result, they must remain in isolation for the remainder of the 10-day isolation period. This is because they could still develop the coronavirus (COVID-19) within the remaining days.
- **if the test result is positive, they should inform their setting immediately, and must isolate for at least 10 days from the onset of their symptoms**



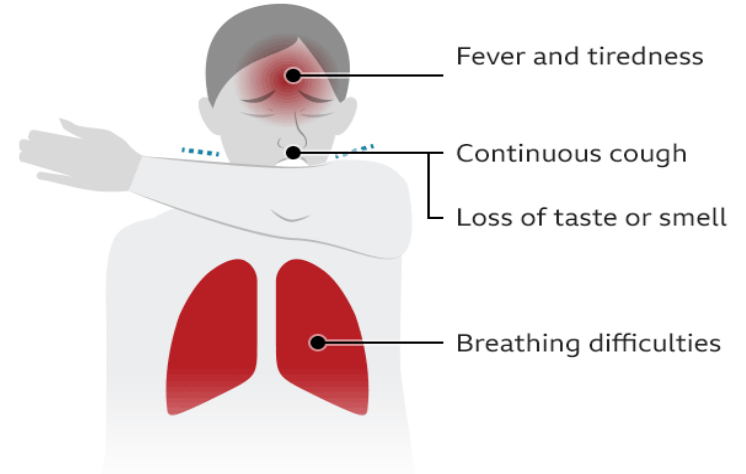
The health protection team will work with schools in this situation to guide them through the actions they need to take. Based on the advice from the health protection team, schools must send home those people who have been in close contact with the person who has tested positive, advising them to self-isolate for 10 days since they were last in close contact with that person when they were infectious



## Checking for symptoms of Covid-19

- Temperature checks will not be taken on arrival by the school but we recommend parents do this daily as an extra precaution.
- **Do not risk the lives of our pupils and staff by administering Calpol before bringing your child to school to bring down a temperature.**
- Any child in school who displays symptoms will be placed in an isolation area until they are collected by parents/carers.
- Parents/carers will be called immediately and will be required to immediately collect their child from school.

### Coronavirus: Key symptoms



Source: NHS

BBC





# Public Health England Advice

## PPE-Personal Protective Equipment

-Wearing a face covering or face mask in primary schools is **not recommended for primary pupils.**

-PPE is only needed if children need intimate care, young people and students whose care routinely already involves the use of PPE due to their intimate care or if a child, young person or other learner becomes unwell with symptoms of coronavirus.

## Social Distancing

We know that, unlike older children and adults, early years and primary age children **cannot be expected to remain 2 metres apart from each other and staff.** Schools should ensure protective measures are in place:

- avoiding contact with anyone with symptoms or who has tested positive
- frequent hand cleaning and good respiratory hygiene practices
- regular cleaning of settings
- minimising contact and mixing and keeping spaces well-ventilated

We encourage older pupils to socially distance when possible.

## Key Information

In schools, preventing the spread of coronavirus involves dealing with direct transmission (for instance, when in close contact with those sneezing and coughing) and indirect transmission (via touching contaminated surfaces).

We have protective measures in place and these include:

- minimising contact with individuals who are unwell by ensuring that those who have coronavirus symptoms, or who have someone in their household who does, do not attend childcare settings, schools or colleges
- cleaning hands more often than usual - wash hands thoroughly for 20 seconds with running water and soap and dry them thoroughly or use alcohol hand rub or sanitiser ensuring that all parts of the hands are covered
- ensuring good respiratory hygiene by promoting the 'catch it, bin it, kill it' approach
- cleaning frequently touched surfaces often using standard products, such as detergents and bleach
- minimising contact and mixing by altering, as much as possible, the environment (such as classroom layout) and timetables (such as staggered break times).
- ensuring areas in school are well-ventilated by opening windows and doors.
- staff in school will be taking part in regular asymptomatic testing (LFD tests).





## Hygiene Measures

- The school will be thoroughly cleaned throughout the day, including toilets.
- Regular hand washing timetabled for all classrooms.
- [Catch It/Bin It/Kill It.](#)
- Handwashing will be communicated and timetabled regularly in school. Most classrooms are fitted with sinks and communal areas are fitted with a sink, soap and hand sanitizers.
- All areas of the school will be well-ventilated.
- Tissues will be available in all classrooms in order to [Catch It/Bin It/Kill It.](#)
- Common areas and equipment will be cleaned down at regular intervals during the day with antibacterial sprays and wipes.
- Equipment will be given to all pupils to avoid sharing.
- Water bottles will be provided to all children on the first day of school. These will be washed regularly.

### CATCH IT

Germs spread easily. Always carry tissues and use them to catch your cough or sneeze.



### BIN IT

Germs can live for several hours on tissues. Dispose of your tissue as soon as possible.



### KILL IT

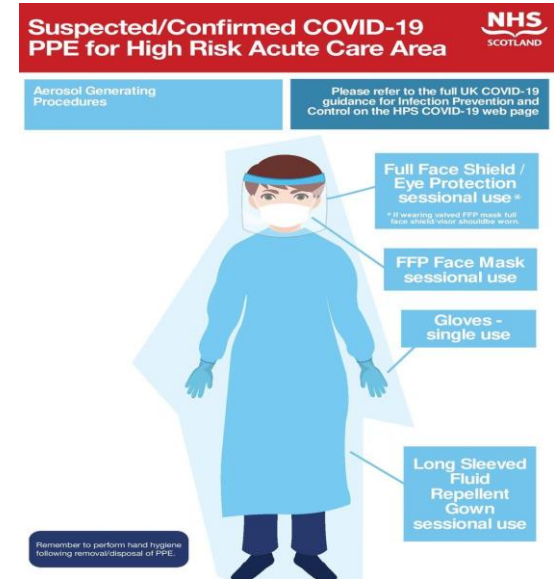
Hands can transfer germs to every surface you touch. Clean your hands as soon as possible.





# Personal Protective Equipment

- PPE will be provided to staff when dealing with pupils who have intimate care needs and any pupils displaying symptoms.
- This will also be available for staff that request it who feel vulnerable.
- It is down to staff and pupil's personal choice to wear PPE.
- School will not provide PPE for pupils as it is against Public Health's advice.
- There will be a room within the school for CoVid19 with PPE stock and facilities for any child displaying symptoms.
- Any pupil displaying symptoms will be taken to this room and parents will be called to immediately collect. A call will then be made to all other children's parents within that bubble to inform them.





## Borrowed DfE Devices

Any child who has been allocated a DfE device or Wifi connection by the school must return these items to school on Monday 8<sup>th</sup> March.

We need to have all devices returned to us so that in the event of any bubble closures we can immediately allocate these devices to pupils who are unable to attend school due to self-isolation.

When pupils return their devices to school on the 8<sup>th</sup> March, they should take them to their classroom ready for collection. A member of the admin team will then reallocate them to the school ready for redistribution when needed.

If you have any questions about this, please contact the school on the [admin@rokeby.hull.sch.uk](mailto:admin@rokeby.hull.sch.uk) email address.

## We can't wait to see you all soon!

- We will see you all on **Monday 8<sup>th</sup> March**
- If you need to speak to anyone in school before then, please do not hesitate to contact us:
  - Telephone: 01482 508915
  - Email: [admin@rokeby.hull.sch.uk](mailto:admin@rokeby.hull.sch.uk)
  - Or contact your child's class teacher using their school email address

Take care and stay safe.