

Returning to School on June 8th - School Plans and Advice for Parents in the EYFS/Year 1/Year 6 and Critical Workers

In line with government guidelines we are planning to open the school to more pupils from Monday 8th June, this will be done in phases over the week (this is subject to further government guidelines being produced).

We want to share with you our plans for a safe return to school for your children and our staff.

Thank you for all your emails and phone calls since the announcement - it is wonderful to receive your encouragement and support. We want to make this a positive and caring experience for all the children, to ensure they feel safe and settled as we ease them back into school life. We are sharing this information so parents know what it's going to be like in school and this will enable you to make a decision about sending your children back to school. By sending your child to school you are agreeing to the provision and systems we have put in place.

National Guidance for parents [here](#)



ROKEBY PARK
PRIMARY SCHOOL

We have made many alterations to the way the school runs to ensure it is as safe as possible for the return of more pupils and staff. We want to share with all parents information about the protective measures that have been put in place. This will enable you to make an informed decision about whether you want to send your child back to school and will ensure you are fully aware of how things will work in school.

We have developed the plan for school provision based on staff availability and the rooms available to allow for appropriate social distancing. We have completed a thorough risk assessment process which has helped us to ensure the school is as safe as possible.

Expectations of Parents

We are doing everything we can in school to safeguard children, parents and staff and we are asking that you support us with this outside school too.

Please ensure you are adhering to the government guidelines on social distancing when at home. If we become aware that guidelines are not being followed outside school we will take action because you will be putting others in school at risk.

Attendance at School

Children in Reception, Year 1 and Year 6 who will be attending school have been offered a full time place and are expected to attend full time Monday to Friday.

Returning to school is parental choice and you are under no obligation to take a place. You will not be issued with fines if you do not want to send your child back to school during the pandemic.

If your child or a member of your family shows any symptoms of the Coronavirus your child must not attend school. This is very important and will help stop the virus spreading.



**ROKEBY PARK
PRIMARY SCHOOL**

Public Health England Advice

PPE-Personal Protective Equipment

- Wearing a face covering, face mask or gloves in schools or other education settings is not recommended.
- PPE is only needed if children need intimate care.
- PPE is only needed if a child becomes unwell at school with the symptoms of Coronavirus.

Social Distancing

We know that, unlike older children and adults, early years and primary age children cannot be expected to remain 2 metres apart from each other and staff. In deciding to bring more children back to early years and schools, we are taking this into account. Schools should therefore work through the hierarchy of measures set out above:

- avoiding contact with anyone with symptoms
- frequent hand cleaning and good respiratory hygiene practices
- regular cleaning of settings
- minimising contact and mixing

Where settings can keep children 2m away-they should do so i.e. (Year 6).

National Guidance [here](#)

In schools, preventing the spread of coronavirus involves dealing with direct transmission (for instance, when in close contact with those sneezing and coughing) and indirect transmission (via touching contaminated surfaces). We will teach children about preventative measures and also put preventative measures in place. These include:

- avoiding touching the face, eyes, nose and mouth.
- minimising contact with individuals who are unwell by ensuring that those who have coronavirus symptoms, or who have someone in their household who does, do not attend school.
- cleaning hands more often than usual ensuring children wash their hands thoroughly for 20 seconds with running water and soap and dry them thoroughly or use alcohol hand rub or sanitiser ensuring that all parts of the hands are covered.
- ensuring good respiratory hygiene by promoting the 'catch it, bin it, kill it' approach
- cleaning frequently touched surfaces often using standard products, such as detergents and bleach.
- minimising contact and mixing by altering, as much as possible, the environment (such as classroom layout) and timetables (such as staggered break times).



In school....

To ensure the school is safe for pupils and staff from 8th June:

- The pupils will be organised in 'bubbles' of no more than 13 children in each group (this is due to the amount of space in school allowing for social distancing).
- Each bubble group will have staggered start times, finish times and lunch times to allow for social distancing (if you have children in multiple 'bubble groups' you will be contacted to make separate arrangements for drop off and collection times). You must stick to your allocated times and not be late.
- Each bubble group will enter the school grounds at different points and will have their own entrance into school with 2m demarcations for social distancing.
- Pupils in EYFS will be encouraged to keep 2 metres apart, however this will not always be possible. In school they will not mix with any pupils or staff who are not in their group.
- Tables in classrooms for Year 1, Year 6 and the critical worker pupil group have been placed 2 metres apart and pupils will sit at the same named desk each day and have their own resources.
- Each bubble will have its own designated toilet and outdoor area for breaks.
- Each bubble will be supervised by the same staff throughout the day for consistency and there will be at least 2 members of staff in each bubble.
- All resources and tables will be regularly cleaned throughout the day
- Lunch (packed school lunch, sandwiches etc.) will be eaten inside each bubble's classroom. School packed lunches will be delivered to classrooms each day by lunch staff. Pupils can bring their own packed lunch but this must be in a plastic box that can be wiped - no packed lunch bags please.
- There will be no breakfast club or after school clubs running due to social distancing guidelines.
- Children in bubbles must attend every day unless they are ill.
- Only limited, essential visitors will be allowed onto the school site.

National Guidance [here](#)



Hygiene Measures

- Additional cleaning will be in place throughout the day and at the end of each day classrooms will be deep cleaned. Pupils will use anti-bac wipes to clean desks and wipe their resources (this will be supervised by staff).
- Handwashing will be communicated and timetabled regularly in school. All classrooms and communal areas will have soap and hand sanitizer.
- Tissues will be available in all classrooms in order to [Catch It/Bin It/Kill It](#), and used tissues will be placed in lidded bins.
- Equipment will be restricted in the EYFS and cleaned regularly throughout the day. Year 1 and all other pupils will have their own classroom equipment in a labelled plastic wallet. Shared resources will be cleaned between uses.
- Pupils must bring their own, named water bottle which must be left at school.
- All rooms will be well ventilated and when possible lessons will be outside.
- If children are bringing packed lunches from home these must be in a plastic container (not packed lunch bag) that can be easily cleaned by a member of staff. Pupils must carry their own packed lunches.
- Pupils must not bring bags or other personal belongings to school.
- Books, homework, pictures etc. will not be sent home. Reading resources will be available on-line.
- Pupils must bring their own named sun lotion (preferably spray) which must be left at school.
- Pupils should wear clean clothes every day (preferably school uniform) and shower after school each day and their clothes should be washed too.

CATCH IT

Germs spread easily. Always carry tissues and use them to catch your cough or sneeze.



BIN IT

Germs can live for several hours on tissues. Dispose of your tissue as soon as possible.



KILL IT

Hands can transfer germs to every surface you touch. Clean your hands as soon as possible.



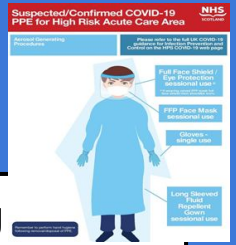
National Guidance [here](#)



Personal Protective Equipment

- The government has advised that there is no need for staff in schools to wear PPE during their day to day work and should only wear this when providing intimate care to pupils.
- Public Health England advise against gloves being worn and say that regular hand washing is much more effective to help prevent the spread of the virus.
- PPE will be provided to staff when dealing with pupils who have intimate care needs and any pupils displaying symptoms.
- If staff and pupils decide to wear their own PPE this will be allowed in school.
- School will not provide PPE unless this is for intimate care or for dealing pupils who are ill or injured.
- Visors will be provided if there is a risk to eyes.
- The school has a designated area for pupils who display symptoms. PPE is available within this area. Parents will be called immediately if a child presents with symptoms. A call will then be made to parents of other children within that 'bubble' to inform them.
- The schools stock of PPE is regularly monitored by the senior leadership team.

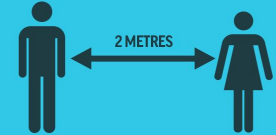
National Guidance [here](#)



Social Distancing

- Staggered start times/finish times/breaks/lunch breaks.
- Children organised into 'bubbles' and will stay in these all day with the same staff.
- School entrances and playground 2m distancing with signage.
- Designated play areas for each 'bubble' during a staggered break/lunch time rota.
- Children will not be able to play football and other contact sports - social distancing will be used at break times and all children must follow instructions from staff.
- Designated toilets for each 'bubble' with adult supervision to ensure pupils are socially distancing.
- Parents to drop children off at school gates and staff to collect with designated entrance for each group.
- Staff cannot sit with or hug your child if they are distressed.
- 13 pupils maximum in each class 'bubble' with 2m distancing in Year 1, Year 6 and critical worker groups.
- 2m distancing encouraged in nursery and reception but this cannot be guaranteed.
- Resources in all classrooms regularly cleaned with anti-bacterial wipes.
- Toys and resources in EYFS regularly cleaned throughout the day.
- Online assemblies, meetings with parents, outside agencies, staff meetings and CPD.
- One way system in corridors around the school.
- No breakfast or after school clubs will be available due to children being unable to mix outside their bubble.

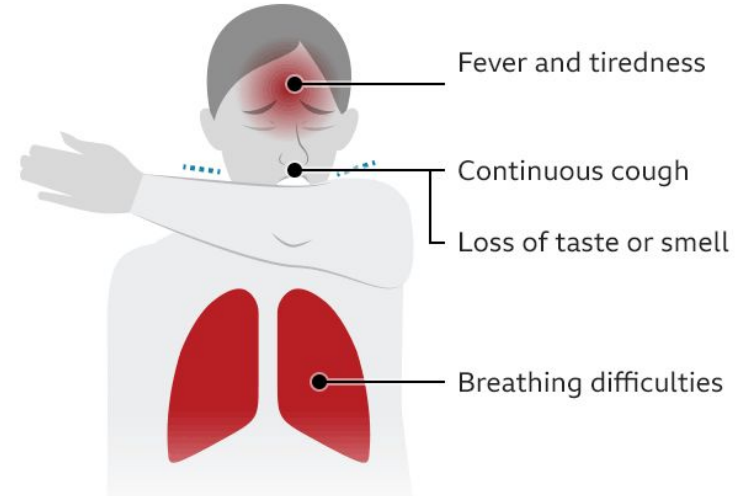
**YOU NEED TO STAY 2 METRES
APART TO **SAVE LIVES NOW****



Checking/Testing of staff and pupils for symptoms

- Any child or adult showing symptoms in school will be placed in an isolation area and parents will be contacted and must collect their child and siblings immediately.
- Any child/adult with symptoms will be recommended to take a test and follow the appropriate advice on self-isolating themselves and their family members. ie self-isolation for 7 days etc.
- If we have a confirmed case in school - all adults and children in the affected 'bubble' will be referred for testing immediately and recommendations from Public Health England will be followed, including self-isolation and isolation of other family members.
- If any member of your family is showing any symptoms, please follow the government guidelines found on the link on this page.
- If you need any advice or you are in doubt about whether your child should attend school, please telephone the school - please do not come to school in person.

Coronavirus: Key symptoms



National Guidance [here](#)

National Guidance [here](#)



ROKEBY PARK
PRIMARY SCHOOL

Extremely Clinically Vulnerable or Clinically Vulnerable Pupils

- Some pupils should not attend school due to serious underlying health conditions.
- The government has published guidelines about this which can be accessed on the gov.uk website.
- If you are unsure about whether your child can attend school, due to their underlying health conditions, please contact Mrs Chaytor or Mrs Gawthorpe for further advice.
- Consideration must also be given to pupils who live with anyone who is classed as extremely clinically vulnerable.
- Please email on admin@rokeby.hull.sch.uk
- Please telephone on 01482 508915

National Guidance [here](#)



ROKEBY PARK
PRIMARY SCHOOL

Pupil Wellbeing

In School:

- The curriculum will cover pupils well-being and pupils will be prepared for social distancing and implementing additional hygiene measures.
- They will have the opportunity to talk about their experiences during lockdown.
- The school's ELSA will be available to support children and will be able to provide 1 to 1 support.
- Every classroom will have a 'worry box' for children to use.
- Successes will be shared on Facebook/website

Online/Home Learners:

- The school team will continue to regularly contact pupils who are learning at home.
- Online safety [activities and advice](#)
- Regular contact from the home learning team for all pupils and concerns passed on to the safeguarding team.
- Home learning support team available in school to answer queries and support with any questions about learning.

Website area

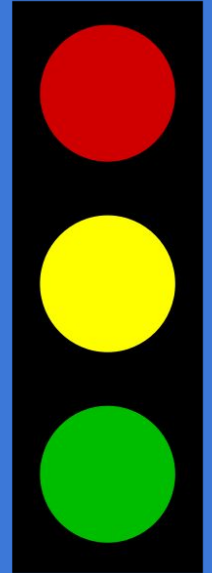
<https://rokebyparkprimary.org.uk/>



ROKEBY PARK
PRIMARY SCHOOL

Pupil Behaviour

- The school's behaviour policy has been updated to reflect the current changes in school.
- Pupils will be taught about new routines that have been put in place and the expectations for social distancing, how important these are and that they are in place to keep everyone safe.
- Pupils will be reminded about the school's expectations for behaviour.
- If pupils refuse to follow the school's behaviour expectations and are putting others at risk, strict sanctions, up to and including exclusion, will be used.
- If a pupil consistently refuses to follow the arrangements for social distancing or they deliberately cough at pupils or staff, putting them at risk, parents will be contacted and must collect their child from school.
- Children must listen to and follow instructions - it is dangerous not to do so.



**The following pages inform you of individual year group arrangements.
We are trying to keep everyone informed to ensure complete transparency about
what's happening in school and the guidance we are following.**

**Please be aware that what we have planned may change at any time due to
government guidance or unforeseen circumstances in school**

**Due to staffing levels and room capacity in the school we have to put a cap on the
number of children we can have and we are almost at full capacity. The parents of
children who have places have already been contacted. There may also be
situations when we have to close a group due to unforeseen circumstance.**

We appreciate your understanding and continued support.

We are expecting a further update from the government on 28th May.



**ROKEBY PARK
PRIMARY SCHOOL**

Nursery

Staffing	Mrs Archibald, Miss Ball & Miss Walker
Start time	9.10 am
Home time	3.10 pm Monday & Tuesday 12.10 pm Wednesday Please note Nursery is closed Wednesday pm, all day Thursday and all day Friday.

Children **must** bring their own named water bottle as we cannot provide shared facilities.

If your child is in nappies please bring an unopened pack of nappies to school which can be left at school for staff to use.
If your child needs regular changes of clothes please bring enough clothes for changes throughout the week. Please bring clothes in a named plastic bag that can be easily wiped. We will keep the clothes at school and wash them if needed. This will help to minimise items being transferred between home and school.
If your child is attending nursery they must not attend any other childcare provision due to the risk of spreading the virus.

- Nursery pupils to enter school by the front main gate.
- Parents and pupils to line up and socially distance in line with markers on the pavement outside school.
- Only 1 parent should bring children to school.
- A member of school staff will come to the gate to meet parents and pupils.
- Staff will not be able to have conversations with parents at the school gate.
- Social distancing must be followed at all times.
- Nursery pupils will be in their bubble group in the after school club mobile.
- The mobile has its own toilets.
- Please refer to the attached site plan which shows routes for different pupil groups into school.
- The front school gates will be locked throughout the day.
- Parents are advised to walk or cycle to school and avoid using public transport at busy times. Unfortunately bikes and scooters cannot be left at school.

National Guidance [here](#)



Reception

Staffing	Miss Heaton, Mrs Brodie, Mrs Mills & Miss Moosa
Start time	9.00 am
Home time	2.50 pm

Children **must** bring their own named water bottle as we cannot provide shared facilities.

If your child is in nappies please bring an unopened pack of nappies to school which can be left at school for staff to use.

If your child needs regular changes of clothes please bring enough clothes for changes throughout the week. Please bring clothes in a named plastic bag that can be easily wiped. We will keep the clothes at school and wash them if needed. This will help to minimise items being transferred between home and school.

- Reception pupils to enter school by the front main gate.
- Parents and pupils to line up and socially distance in line with markers on the pavement outside school.
- Only 1 parent should bring children to school.
- A member of school staff will come to the gate to meet parents and pupils.
- Staff will not be able to have conversations with parents at the school gate.
- Social distancing must be followed at all times.
- Reception pupils will be in their bubble group in their usual classroom..
- The classroom has its own toilets.
- Please refer to the attached site plan which shows routes for different pupil groups into school.
- The front school gates will be locked throughout the day.
- Parents are advised to walk or cycle to school and avoid using public transport at busy times. Unfortunately bikes and scooters cannot be left at school.

National Guidance [here](#)



Year 1

Staffing	Mrs Rabet, Mrs Lambert, Mrs Harvatt & Miss Jupp
Start time	8.50 am
Home time	3.00 pm

Children **must** bring their own named water bottle as we cannot provide shared facilities.

National Guidance [here](#)

- Year 1 pupils to enter school by the front main gate.
- Parents and pupils to line up and socially distance in line with markers on the pavement outside school.
- Only 1 parent should bring children to school.
- A member of school staff will come to the gate to meet parents and pupils.
- Staff will not be able to have conversations with parents at the school gate.
- Social distancing must be followed at all times.
- Year 1 pupils will be in their bubble group in their usual classroom..
- The classroom has its own toilets.
- Please refer to the attached site plan which shows routes for different pupil groups into school.
- The front school gates will be locked throughout the day.
- Parents are advised to walk or cycle to school and avoid using public transport at busy times. Unfortunately bikes and scooters cannot be left at school.



Year 6

Staffing	Mrs Wilde, Miss Driscoll, Mrs Duffield & Mrs Young
Start time	9.00 am
Home time	2.50 pm

Children **must** bring their own named water bottle as we cannot provide shared facilities.

National Guidance [here](#)

- Year 6 pupils to enter school by the back car park gate.
- Parents and pupils to line up and socially distance in line with markers on the pavement outside school.
- Only 1 parent should bring children to school.
- A member of school staff will come to the gate to meet parents and pupils.
- Staff will not be able to have conversations with parents at the school gate.
- Social distancing must be followed at all times.
- Year 6 pupils will be in their bubble group in their usual classroom..
- The Year 6 bubble will have their own allocated toilets (girls - disabled toilet, boys - boys' toilets).
- Please refer to the attached site plan which shows routes for different pupil groups into school.
- The front school gates will be locked throughout the day.
- Parents are advised to walk or cycle to school and avoid using public transport at busy times. Unfortunately bikes and scooters cannot be left at school.



Critical Workers Groups

Staffing	Miss Coates, Miss Ireland, Mrs K Clark, Miss Hewson, Miss Burbage, Miss Commander, Mrs Litten & Mrs Hawkins
Start time	8:50 am
Home time	3:00 pm

Children **must** bring their own named water bottle as we cannot provide shared facilities.

Critical workers will need to book places for their children on the School Money App. A separate letter will be sent with more information.

- Critical worker group to enter school by the back car park gate.
- Parents and pupils to line up and socially distance in line with markers on the pavement outside school.
- Only 1 parent should bring children to school.
- A member of school staff will come to the gate to meet parents and pupils.
- Staff will not be able to have conversations with parents at the school gate.
- Social distancing must be followed at all times.
- Pupils will be in two separate bubble groups. One in the Year 3 classroom and in the Year 4 classroom.
- This group of pupils will have allocated toilets. They will use the girls' toilets where cubicles will be separated for boys and girls. The toilets will be supervised by staff when used by pupils.
- Please refer to the attached site plan which shows routes for different pupil groups into school.
- The front school gates will be locked throughout the day.
- Parents are advised to walk or cycle to school and avoid using public transport at busy times. Unfortunately bikes and scooters cannot be left at school.

National Guidance [here](#)



Online/Home Learning

Each morning lessons in school will cover reading, writing and maths. There will be a particular focus on reading.

Afternoon lessons will be based on projects and topics.

Learning in school will be in line with online/home learning.

Children in EYFS will follow the EYFS Development Matters.

Y6 will do some work to prepare for secondary school.

All pupils will have PSHE lessons to help support emotional wellbeing.

Online/Home Learning

Our online/home learning offer will continue as usual and is currently being developed even more by The Constellation Trust.

Home learning packs will continue to be delivered to pupils who have limited access to the internet.

If you would like to speak to your child's teacher about their home learning please contact the school.



Important Reminders for Parents...

- Only 1 parent should come to school to avoid large crowds of people gathering outside the school gate.
- Every 'bubble' group has been allocated a 5 minute drop off and collection slots before another 'bubble' group are due to arrive at school. You **must stick to your allocated time slot and not be late.** If you do not do this we will be unable to maintain the carefully planned social distancing.
- Once you have dropped your child off or collected them from school you must leave immediately and not gather around the school gate area or wait for other parents. We must ensure the safety of everyone around the school site and insist that social distancing is maintained. Other groups will be arriving after your allocated slot.
- Staff cannot come to you if your child is upset and you cannot bring them into school.
- If this happens please take your child home and contact the school by telephone if you feel your child will be able to safely come into school later. We will then advise how and when this should happen.
- We will do our best to reassure your child and they will have the opportunity to talk about their feelings and worries when they are in school.
- We want to work with you to ensure the school is as safe as it possibly can be so thank you for your continued support .

National Guidance [here](#)



Keeping in Touch

- Weekly update to all parents and pupils
- Updated home learning area available on [school website](#)
- Regularly [updated news area](#) on school website
- [Covid19-dedicated area for information](#) on our website
- Updates to be posted on [Facebook](#) and [Twitter](#)
- Updates, letters etc. to be sent via Ping (please sign up with the school office if you do not have Ping - we will not be sending out hard copies of letters etc.)
- Individual staff can be contacted by telephoning the school. Staff will not be available for conversation at the school gate. If parents need to pass on messages to staff please ring the office before school starts i.e. from 8.30 am.
- Parents will not be allowed onto the school site. Meetings with parents will take place on line or over the telephone.
- Pupils who are eligible for free school meals and attend school will get a free meal at school.
- If your child is entitled to free school meals (FSM) and they are not attending school you will continue to receive the FSM vouchers. If you have any queries about the vouchers please contact Mrs Gawthorpe.



National Guidance [here](#)